



GMT MONTHLY MEMBERSHIP PROGRESS REPORT

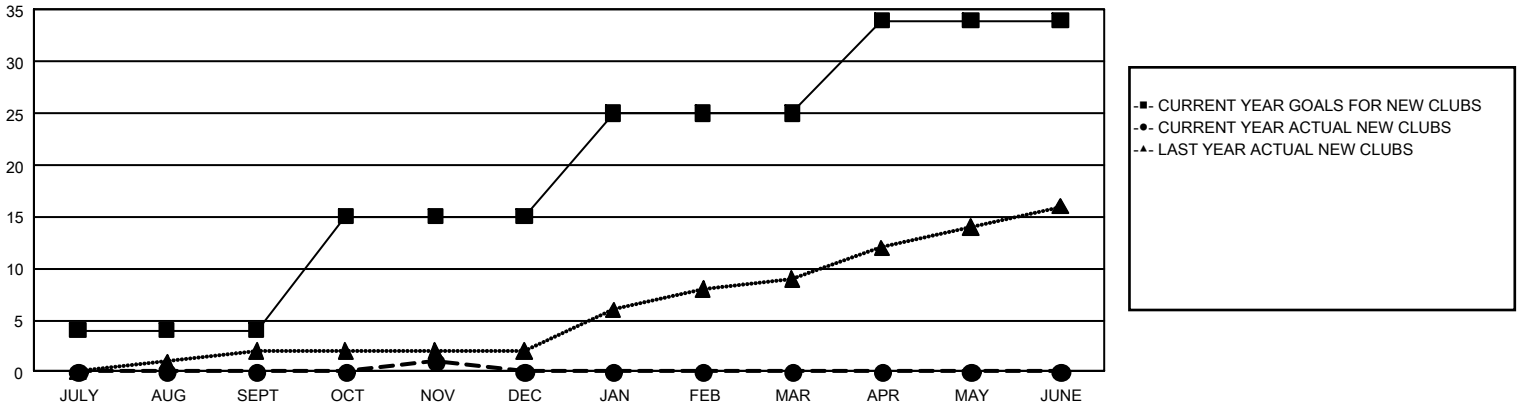
GAT Constitutional Area 2

Results as of: 11/30/2024

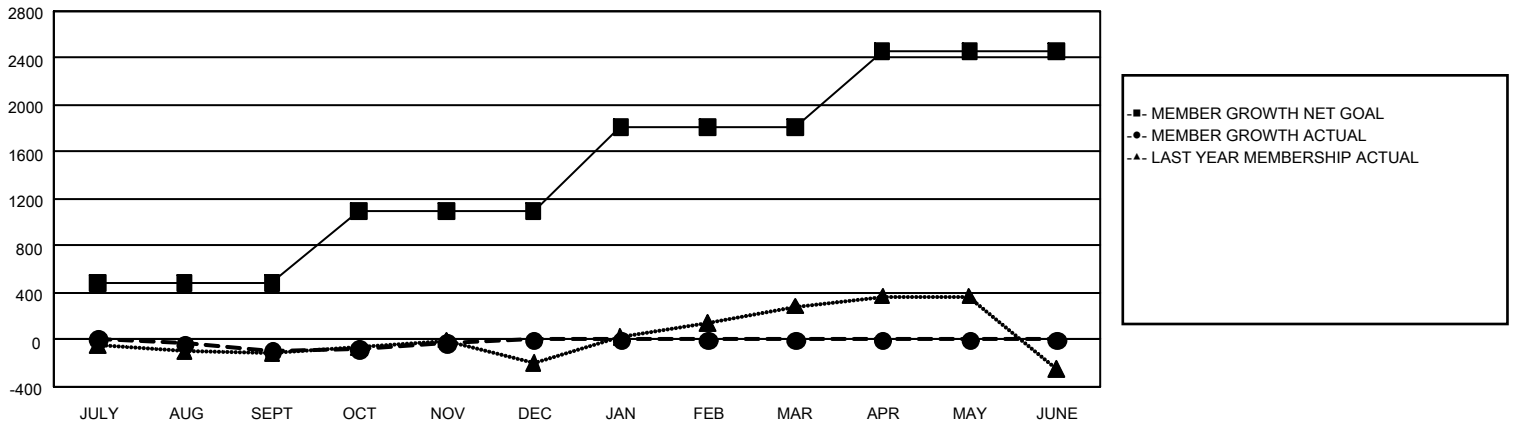
REPORT DOES NOT INCLUDE CLUBS IN UNDISTRICTED AREAS.

Clubs				Members			
RESULTS FOR 2024-2025				RESULTS FOR 2024-2025			
QUARTER	NEW CLUB GOAL	NEW CLUBS	DROPPED CLUBS	QUARTER	MEMBER GROWTH NET GOAL	MEMBER GROWTH ACTUAL	DROPPED MEMBERS ACTUAL (including transfers)
JULY/AUG/SEPT	4	0	2	JULY/AUG/SEPT	483	586	586
OCT/NOV/DEC	11	1	2	OCT/NOV/DEC	609	704	554
JAN/FEB/MAR	10	0	0	JAN/FEB/MAR	718	0	0
APR/MAY/JUNE	9	0	0	APR/MAY/JUNE	647	0	0

GOALS AND ACTUAL NEW CLUBS CUMULATIVE



GOALS AND ACTUAL MEMBERS CUMULATIVE



DROPPED CLUBS: 4	411 CLUBS OF 1,170 ADDED 1 OR MORE NEW MEMBERS	<u>GENDER DISTRIBUTION</u>			
<u>DROPPED MEMBERS</u>		MALE	16,275 (63.06%)		
DECEASED	154	FEMALE	9,525 (36.91%)		
CLUB CANCELLED	9	CLICK HERE FOR CUMULATIVE MEMBERSHIP DATA			
OTHER	960			TOTAL FAMILY UNIT MEMBERS	0
TOTAL	1,123			FAMILY MEMBERS PAYING HALF DUES	0